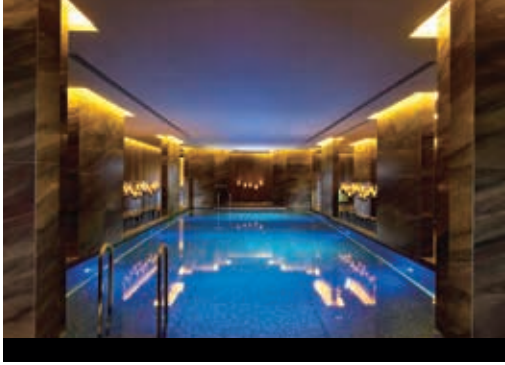




WALDORF ASTORIA®

BEIJING
北京华尔道夫酒店



Waldorf Astoria Beijing is an extraordinary place where your own story begins. Standing as a dramatic bronze building, the hotel is a landmark in the heart of the Wangfujing district, and an icon where time transcends through the rich Chinese tradition to today's sophisticated affluent lifestyle. With its signature True Waldorf Service, the hotel exemplifies discreet personalized attention, creating unforgettable moments that add up to an extraordinary experience that could only happen at a Waldorf Astoria. Guests of Waldorf Astoria Beijing also enjoy the unparalleled benefits of the Hilton HHonors Program.

ACCOMMODATIONS

The hotel features 171 luxuriously appointed guestrooms including 38 suites, several with furnished terraces in the main hotel tower. Each room is spacious with elegantly and thoughtfully designed separate living, work and resting areas, providing a generous residential environment amidst modern technology and exquisite Ferragamo amenities. The hotel also offers inspiring residential experiences in the Waldorf Hutong Villa, plus 3 Hutong studios and a room in two beautifully constructed (to original specifications) Hutongs. Waldorf Hutong Villa is 2-storey, comprises 2 bedrooms, a grand terrace, a private swimming pool, an entertainment area, a living room and a separate dining room for 12 guests.

EVENTS

The meeting spaces at Waldorf Astoria Beijing are ideally suited to groups requiring a discreet place to meet for business whilst still having close access to Beijing's leisure and tourist attractions. The hotel's downtown location is in close proximity to Central Government providing easy access for delegations or meetings with Government Departments. Different function spaces can accommodate meetings from eight people to 200 people.

RESTAURANTS

The *Peacock Alley* lounge seats up to 66 people, with a Bar offering a light menu and delightful Afternoon Tea. It is also an elegant venue for evening cocktails. *Brasserie 1893*, the main dining room features 90 seats including a Chef's Table for eight guests. The show kitchen presents a visual feast and brings the Chefs closer to our guests. *Zijin Mansion* provides an exceptional dining experience with five private dining rooms, the largest seats 24 guests. The main dining room seats 40 guests. The restaurant specializes in fine Cantonese cuisine and some of Beijing's favorite delicacies.

WALDORF ASTORIA SPA AND FITNESS

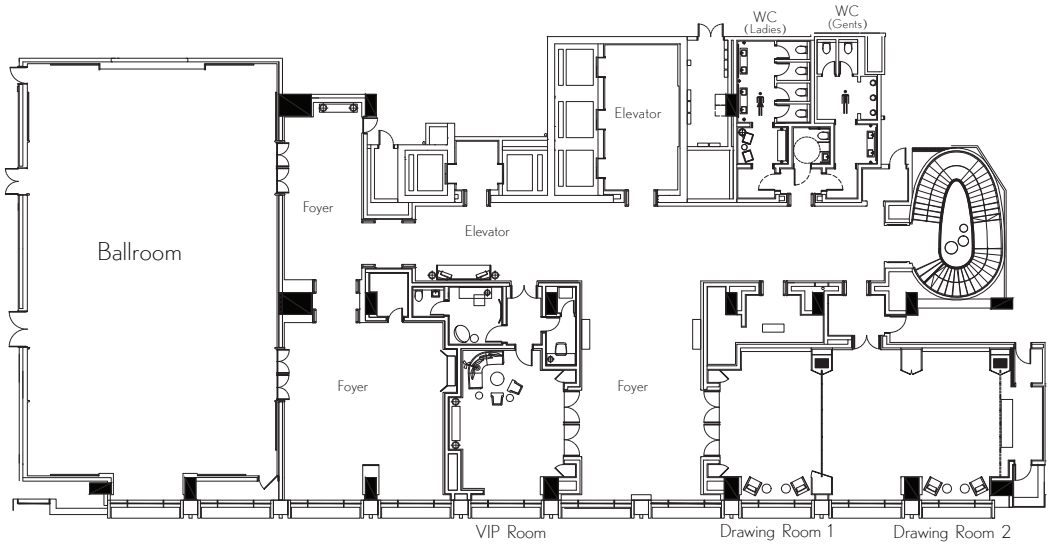
Relax, unwind and find your personal sanctuary at the Waldorf Astoria Spa. With seven treatment suites and a spa retail boutique, the spa specializes in authentic and energizing body and face treatments for both men and women. The Fitness Room is equipped with the latest cardio vascular and weight training machines. There are also a heated indoor swimming pool and whirlpool, open daily from 0600hrs to 2200hrs.





FLOORPLANS

F2



FUNCTION ROOM CAPACITY

	Total Sq. (Ft.)	Room Size (Ft.)	Ceiling Ht. (Ft.)	Class Room	Standing	Board Room	Theater	Banquet
Waldorf Ballroom	3096	72 x 43	20	120	280	60	240	160
VIP Room	368	23 x 16	9.2	20	30	18	40	20
Drawing Room 1	500	27.2 x 18.4	9.2	20	40	18	40	20
Drawing Room 2	884	32.5 x 27.2	9.2	30	80	30	60	40
Drawing Room 1+2	1382	50.8 x 27.2	9.2	54	120	48	100	60

	Total Sq. (m)	Room Size (m)	Ceiling Ht. (m)	Class Room	Standing	Board Room	Theater	Banquet
Waldorf Ballroom	286	22 x 13	6.0	120	280	60	240	160
VIP Room	35	7 x 5	2.8	20	30	18	40	20
Drawing Room 1	46	8.3 x 5.6	2.8	20	40	18	40	20
Drawing Room 2	82	9.9 x 8.3	2.8	30	80	30	60	40
Drawing Room 1+2	128	16 x 8	2.8	54	120	48	100	60

5-15 JINYU HUTONG, DONGCHENG DISTRICT, BEIJING 100006, CHINA Tel+86 10 85208989

WALDORFASTORIA.COM/BEIJING

Reservations: MAINLAND CHINA: 800 820 0600; 400 820 0500 (MOBILE USERS) HONG KONG: 800 96 8391 TAIWAN: 00801 65 1818 SINGAPORE: 1800 737 1818; WORLDWIDE: 800 44 45 86 67